

# Statewide Radio Network Project Update



# Statewide Radio Network Project Update

## Engineering Design and Procurement:

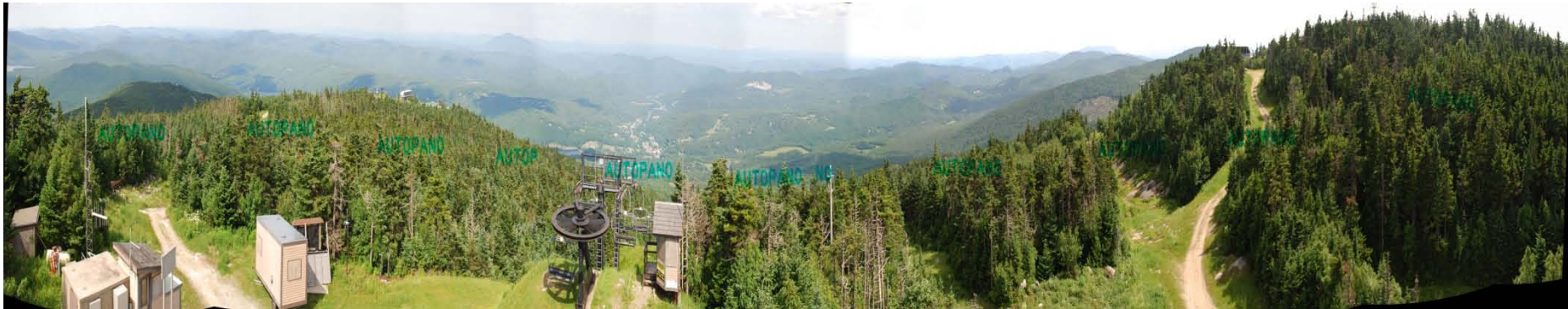
- Configuration of user talk groups completed
  - Each utility allocated single talk group capable of expanding to 10 groups
- Automatic Vehicle Location (AVL) is operational and being tested
- Gould Electronics continues to provide design and engineering support

## Field Work:

- Dispatch consoles are operational and being tested
- 6 sites - commissioned and operational
- 5 sites - construction is completed and ready for radio equipment
- 10 sites - in construction phase
- Field testing of coverage is performing as expected



Visual impact balloon test



Okemo Mt. Panoramic



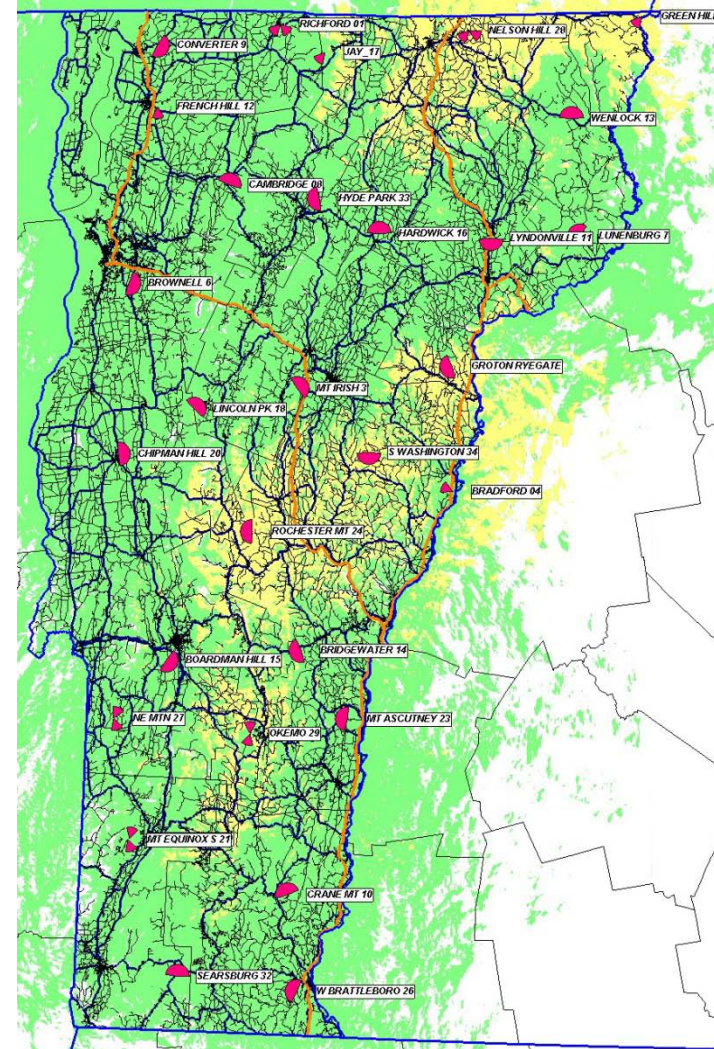
# Statewide Radio Network Project Update

## Regulatory Activities:

- Approval received for 29 sites
  - 24 approvals for SRP transmit locations including Wells site
  - 5 approvals for backhaul to fiber backbone
- Permitting submitted for 4 additional sites
  - Canaan – Colocation at existing site
  - Hyde Park – Colocation with Public Safety tower
  - Okemo – New multiuse public safety tower
  - Derby 9/1 filing – Tower and building replacement at existing site
- Wells radio site
  - Purchased Wells tower, shelter, and easement in Jan, 2011
  - Landowners challenged VELCO's easement right to upgrade facility
  - VELCO continuing to seek resolution but preparing for additional proceedings before PSB to resolve issues
- Hyde Park - Neighbors challenging tower replacement based on aesthetics
- Derby – Neighbors challenging tower replacement based on RF safety

## Schedule:

- Site deployment on schedule through August
- System operational with 20 sites commissioned in December 2011
- Full system coverage - 7/2012



### **Permitting Legend**

Green – Permit granted

Yellow – Permit submitted and Pre-permit

# Statewide Radio Network

## Project Update

### Wells Radio Site:

- Site Need
  - Northeast Mountain provides best regional coverage on single, already developed site
  - Site addresses current lack of coverage in the Wells region
  - Alternatives would require 2 green field sites for comparable coverage
- Status to date
  - Landowner has filed with VT SPEED for two 337 foot, 900kW wind turbines (1.8MW total)
  - Landowner claims VELCO project overburdens the existing telecommunication easement
  - VELCO offered considerable accommodations to site including alternative location, tower type, and fencing
  - Purchased 80' tower, shelter, and easement January 27, 2011
  - Received CPG for construction of tower and shelter replacement on 3/30/2011
  - Condemnation filed with PSB in June
  - Landowner agreement to allow 2011 construction is in progress
- Next steps
  - Preparation for condemnation proceedings – prehearing conference on 8/23/2011

