

E. Fairfax facility classification

vermont electric power company



February 2016

The E. Fairfax Project

- GMP request to install a new 5.4 Mvar capacitor bank.
- New cap bank required 34.5kV bus expansion.
- Bus expansion could be used for another delivery in the future.

VTA definitions

FACILITIES REFERENCE LEGEND

COMMON FACILITIES:

VELCO FACILITIES THAT COMPRISE THE STATEWIDE, HIGH VOLTAGE TRANSMISSION GRID, INTERCONNECTING AND SERVING THE LOAD CENTERS OF THE STATE, AND ARE USED IN COMMON BY ALL PURCHASERS OF TRANSMISSION SERVICES ON A STATEWIDE BASIS. THIS INCLUDES FACILITIES CONSTRUCTED PRIOR TO 7-1-90, OR ANY SPECIFIC FACILITIES CONSTRUCTED AFTER 7-1-90 THAT HAVE BEEN RECLASSIFIED AS COMMON FACILITIES AS A RESULT OF BEING IN SERVICE FOR A PERIOD OF TEN YEARS.

SPECIFIC FACILITIES:

HIGH VOLTAGE LINES, SUBSTATIONS AND OTHER APPURTENANCES CONSTITUTING A DIRECT PHYSICAL CONNECTION TO THE VELCO (COMMON) TRANSMISSION SYSTEM AND ARE NOT PART OF THE LOOPED TRANSMISSION GRID. THESE FACILITIES ARE USED AND INSTALLED TO BENEFIT A REQUESTING PURCHASER OF TRANSMISSION SERVICE. IN THE CASE OF A SUBSTATION (STEPPING DOWN TO A LOWER VOLTAGE) THIS INCLUDES THE TRANSFORMER, HIGH SIDE CIRCUIT SWITCHER, BANK BREAKER, ANCILLARY DEVICES, CONTROLS AND CONTROL CIRCUITRY (REFER TO COMMON FACILITIES DEFINITION FOR CRITERIA OF RECLASSIFICATION).

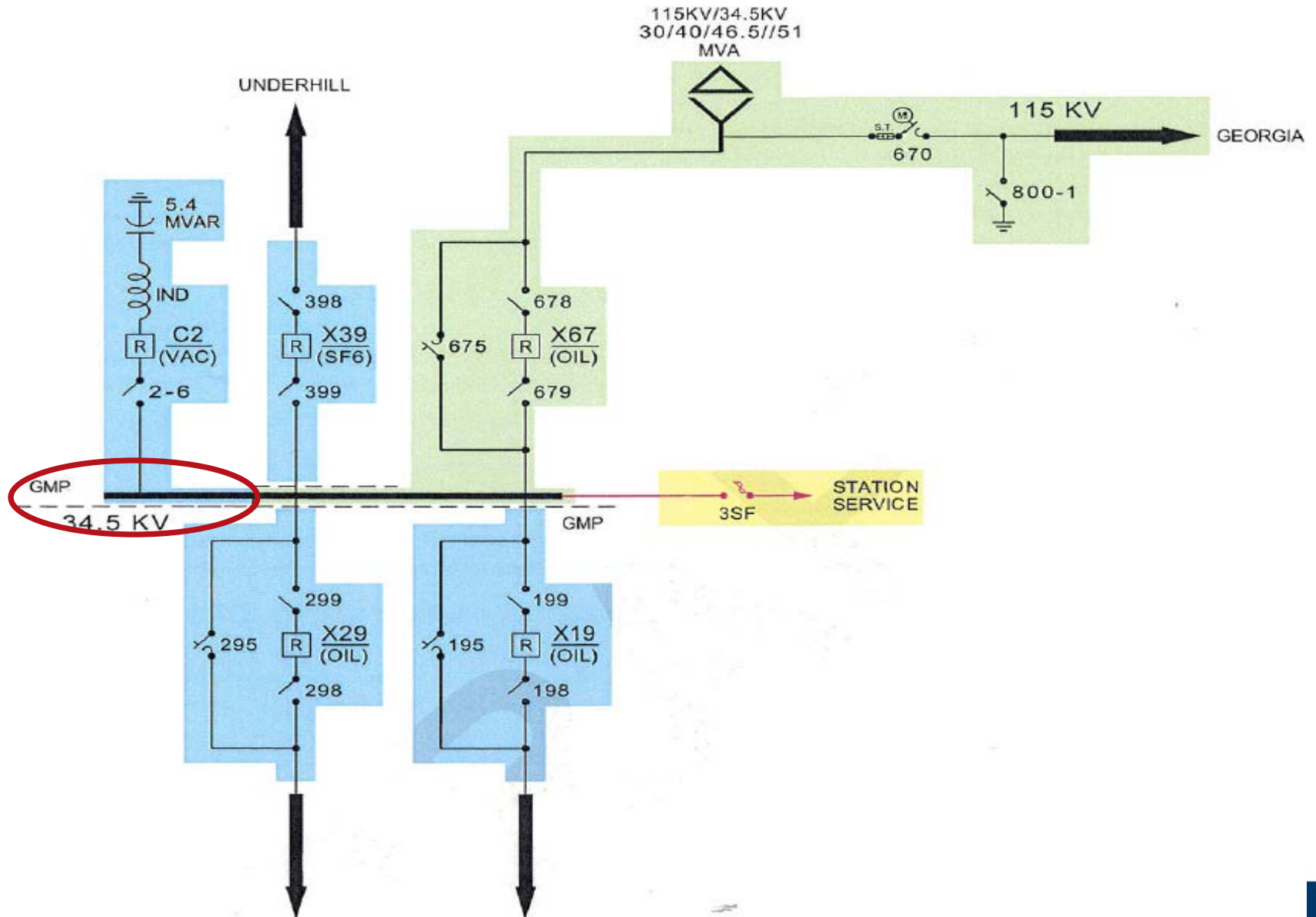
EXCLUSIVE FACILITIES:

EQUIPMENT CONNECTED TO THE LOW VOLTAGE BUS, INCLUDING ANY ASSOCIATED PROTECTION, CONTROL, AND METERING SYSTEMS THAT HAVE BEEN CONSTRUCTED UNDER A VELCO WORK ORDER, AND ARE TO BE FULLY OWNED AND FUNDED BY THE PURCHASER OF TRANSMISSION SERVICE UPON COMMISSIONING. THIS TYPICALLY INCLUDES FOUNDATIONS AND STRUCTURES, BREAKERS AND SWITCHES, INSULATORS, LINE POTENTIAL TRANSFORMERS, CONDUIT, CABLE AND GROUNDING. ONGOING MAINTENANCE AND TESTING OF THESE FACILITIES ARE SUBJECT TO THE TERMS AND CONDITIONS OF VELCO'S SUBSTATION PARTICIPATION AGREEMENT.

SHARED FACILITIES (COMMON USE):

TYPICALLY CONSISTING OF EQUIPMENT LOCATED WITHIN SUBSTATIONS THAT ARE SHARED IN SOME MANNER FOR THE BENEFIT OF BOTH VELCO AND THE PURCHASER OF TRANSMISSION SERVICE. THIS INCLUDES STRUCTURES (BUILDINGS) AND IMPROVEMENTS, FENCING AND GATES, LOW VOLTAGE DISCONNECT SWITCHES, BUS WORK, LOW VOLTAGE POTENTIAL TRANSFORMERS (STATION SERVICE AND BUS POTS), COMPLETE STATION GROUNDING SYSTEMS, SUPPORTS AND CABLE TRAYS, BATTERIES AND CHARGERS, SWITCHSTICKS AND GLOWTECTORS, LADDERS, TABLES AND SUPPLY CABINETS. ONGOING MAINTENANCE AND TESTING OF THESE FACILITIES ARE SUBJECT TO THE TERMS AND CONDITIONS OF VELCO'S SUBSTATION PARTICIPATION AGREEMENT.

E. Fairfax One-Line Diagram



E. Fairfax 34.5kV bus proposal

- VELCO own the 34.5kV bus expansion.
- Classify as a Specific Facility. (GMP pay carrying cost for first 10 years and then becomes a Common Facility)
- Leaves opportunity for future participant to connect.
- Options:
 - 1) Classify as a Specific Facility. (GMP pay carrying cost for first 10 years and then becomes a Common Facility)
 - 2) Transfer ownership of asset and pay CIAC